

## Introducing F9 Version 5 for the AccuFund Accounting Suite Excel Based Financial Reporting

F9 is an easy-to-use Financial Reporting tool that dynamically links AccuFund® General Ledger (GL) data to Microsoft Excel.

Excel users already know how valuable spreadsheets are for financial reporting. F9 leverages that value by delivering your GL data directly to Excel through a dynamic link to the most current information with no exports or manual entries required.

F9 offers an unbeatable feature package including:

- Flexible Cell-based Reporting
- Consolidations
- Drill Down
- Budgeting
- Multiple Date Ranges
- Multi-Currency
- Lists of Account Segments
- Report Analysis
- Excel Forms

F9 does all of this through a dynamic hotlink to the GL, ensuring that all numbers are timely, consistent, and complete.

### Improved User Experience

Utilizing enhancements to the Excel 2007 user interface, new Task Panes allow users to interact with F9 directly from the Excel spreadsheet for faster output and reporting results.

Reporting controls are also new and display in a drop-down format for quick selection of filters. Improved toolsets provide improved Analyze and Zero Suppress functionality.

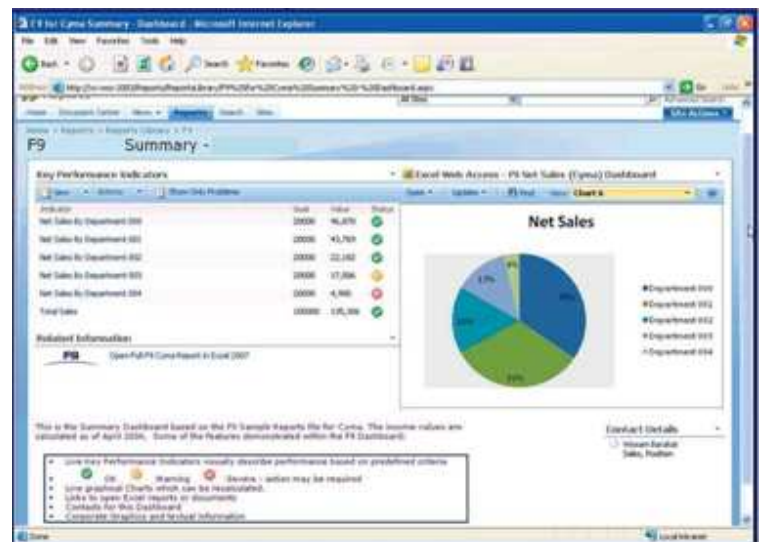
F9 Version 5 is more easily accessible from the Excel Ribbon and displays as a tab among the functional groups. The F9 Ribbon is current with Office 2007 standards with improved buttons, graphics, and descriptions.

All of the new features designed to enhance the usability of F9 Version 5 can be learned through the comprehensive Quick Tours and online help.

### New Business Intelligence Reporting

New data analysis and visualization tools help you analyze information, spot trends, and access your company information more easily. New options in Excel 2007 for sorting and filtering, such as multi-select in AutoFilters, sort or filter by color, and “quick filters” for specific data types make F9 Version 5 the ideal tool for creating reports to analyze complex business data.

*Create customized financial reports in Excel, quickly and use graphics for more visual and powerful presentations of data!*



Use your F9 report data to create PivotTables or PivotChart views more easily by using data fields to reorient data quickly to summarize and find the answers you need.

Key Performance Indicators (KPIs) are easily added to F9 reports via the F9 Report Wizard, Table and Pivot Tables, GL Paste and Analyze functions. The KPIs dynamically change after calculation and can be layered using preset and custom rules. KPI metrics and other report sections can be easily extracted from your F9 reports for use in browser-based dashboards.

F9 integrates with the AccuFund General Ledger. For more information about F9 contact your AccuFund Reseller or contact us at 877-872-2228 Ext 215 or e-mail us at [sales@accufund.com](mailto:sales@accufund.com)